

## GENERAL HINTS

Read the traffic regulations.

See that your brakes are in good order.

Don't cut corners.

Always pass to the left of tram cars.

Don't leave your car in front of theatre or hospital entrances.

Drive carefully when passing a school or playground.

Drive carefully when overtaking or approaching stationary trams and buses.

Don't try to rush in front of trams and other vehicles at close range.

If concerned in an accident give the injured party every assistance, and if anyone is injured report the matter promptly to the police.

To avoid prosecution see that your registration certificate and driver's licence are renewed on or before date of expiry.

In addition to the above restrictions, a driver must not leave his car unattended except for a few minutes, and then only, providing it is left in such a position as not to obstruct traffic.

He must not stop opposite a safety zone on the same side of the street as the zone, nor within 30 feet of it.

He must not stop on nor within a distance of 40 feet from the approach side of any licensed motor omnibus stopping place, nor within 10 feet of the other side thereof.

He must not stop on any licensed motor car stand nor on any licensed cab stand.

He must not leave his car stationary at the kerb within a distance of 30 feet of an intersection.

He must not leave his car unattended within 15 feet of a fire hydrant.

## ON THE OPEN ROAD

Attend to your own speed—do not try to control that of others.

If a car is about to pass you, do not accelerate; keep your own speed.

If you want to go slowly, keep well over to the left and leave a clear road.

If another car is passing you, and finds it must cut in, do not try to jam it out—you may easily cause a disaster.

Don't try to pass another car when a car is approaching from the opposite direction.

Patience in motoring is a supreme virtue.

# SAFETY FIRST!

## VICTORIAN POLICE DEPARTMENT

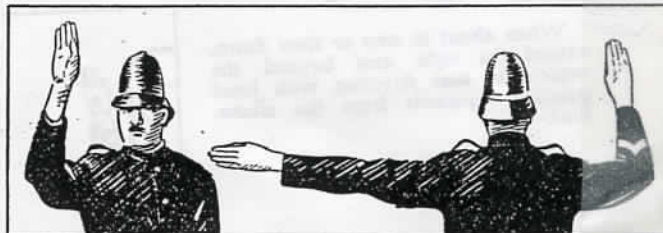
# Advice to Motorists

**N**EARLY 200 persons were killed in Victoria during the year 1926 as a result of motor accidents. In addition, many persons were injured and property to the value of many thousands of pounds was destroyed.

In view of the alarming increase in the number of motor accidents, the Chief Commissioner of Police desires to draw attention to the following traffic signals and regulations, and it is hoped that if strict attention is paid to these matters by all drivers, the danger of accidents will be considerably minimised.

## TRAFFIC SIGNALS

Watch the traffic policeman. He is in command of his intersection. Do as he directs, thus:—



**STOP**

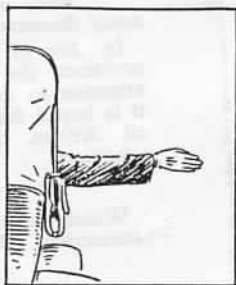


**GO**

## TRAFFIC SIGNALS — Continued.

Always signal before turning to the right, stopping or slowing down.

When about to cross a street to the right, extend the right arm, hand horizontally, beyond the vehicle in that direction, thus:—



When about to stop or slow down, extend the right arm beyond the vehicle in that direction with hand pointing upwards from the elbow, thus:—

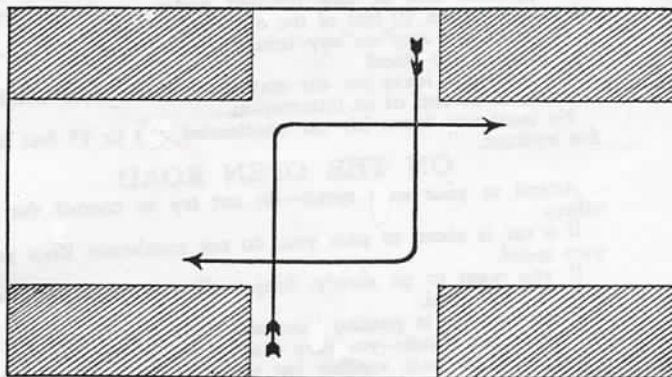


Don't wait until you are actually turning to the right, stopping or slowing down before you give the signal. Give plenty of time. Do not signal when turning to the left—it is unnecessary and confusing.

## TRAFFIC REGULATIONS IN MELBOURNE

When approaching an intersection which you intend to cross and which is not controlled by a constable, you must grant the right-of-way to the vehicle approaching from the right.

Before turning to the right or off side from one street into another, drive parallel to the footway upon the left or near side of the street which you are leaving, until you are as near as practicable to the left hand side of the street you are entering, as shown in the subjoined diagram.



## DON'T TAKE UNNECESSARY RISKS

Fit high-grade tyres — and look after them. The quality, strength and dependability of Australian

# DUNLOP TYRES

ensure you safety, service and economy. Garages stock them.

All States

\* \* \*  
DUNLOP RUBBER CO. OF AUST. LTD.

and N.Z.

## MOTORISTS—IT IS

AND IN YOUR INTERESTS TO JOIN A

## THE ROYAL AUTOMOBILE

94 QUEEN STREET,

MEMBERSHIP:—

SERVICE  
NO ENT. FEE  
SUB. 1.1.0

FULL  
ENT. FE  
SUB.



When crossing from one side to the other side of a street, make the complete turn so that when you arrive at the other side your vehicle will be headed in the same direction as the traffic is proceeding, as shown in the subjoined diagram.

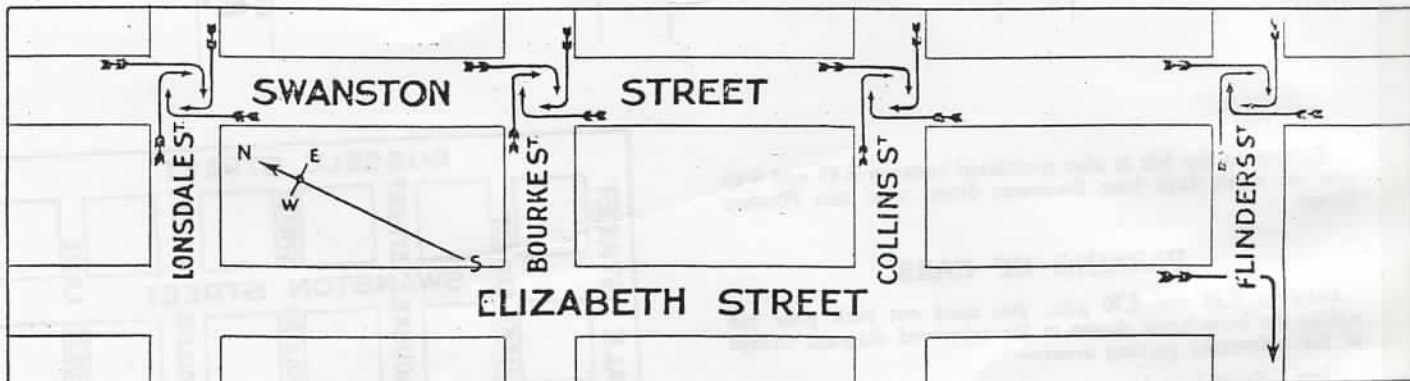


**TURNING TO THE RIGHT** is prohibited in Melbourne at the undermentioned intersections, between 4.30 and 6.30 p.m. from Mondays to Fridays and between 11.30 and 1.30 p.m. on Saturdays:—

- (a) Lonsdale & Swanston Sts.
- (b) Bourke & Elizabeth Sts.
- (c) Bourke & Swanston Sts.
- (d) Collins & Swanston Sts.
- (e) Flinders & Swanston Sts.

**TURNING TO THE RIGHT** is also prohibited in Melbourne between 8.45 and 9.45 a.m. on week days at the intersection of Bourke and Swanston, Collins and Swanston, and Flinders and Swanston Streets.

In the subjoined diagram arrows show where vehicles must not turn during the hours above stated:—



**IT IS YOUR DUTY**

JOIN AND HAVE THE PROTECTION OF

**MOBILE CLUB OF VICTORIA**

STREET, MELBOURNE

**FULL CLUB**

**COUNTRY (FULL CLUB)**

ENT. FEE 2 2 0

ENT. FEE 1 1 0

SUB. 2 2 0

SUB. 1 1 0

**Quick & Certain Pick-up—  
An Even Flow of Power**

**C-O-O-R**

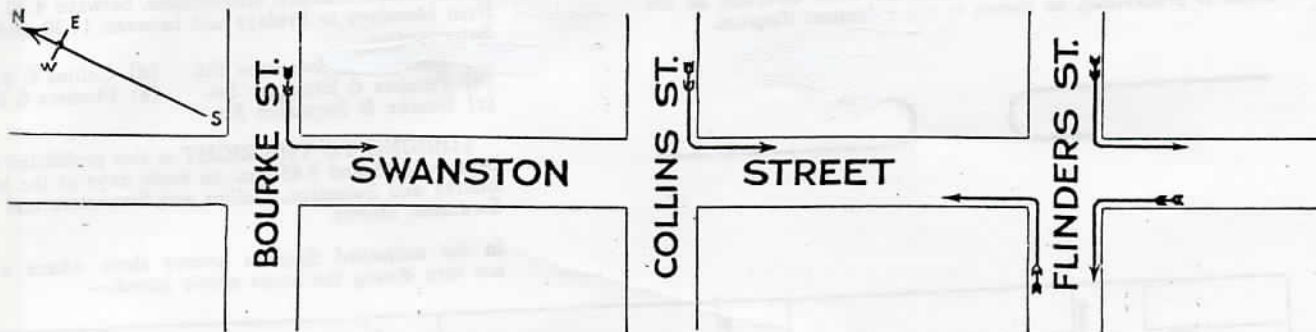
**THE AUSTRALIAN MOTOR SPIRIT**

## TURNING TO THE LEFT

TURNING TO LEFT is prohibited in Melbourne between 4.30 and 6.30 p.m. from Mondays to Fridays, and between 11.30 a.m. and 1.30 p.m. on Saturdays at the following intersections:—

- (a) From Collins, Bourke and Flinders Streets south into Swanston Street.
- (b) From Flinders Street north into Swanston Street.
- (c) From Swanston Street west into Flinders Street.

In the subjoined diagram arrows show where vehicles must not turn:—



Turning to the left is also prohibited between 8.45 and 9.45 a.m. on week days from Swanston Street west into Flinders Street.

### PARKING OF CARS

Between 2.30 and 6.30 p.m., you must not park your car within the boundaries shown in the subjoined diagram, except at the authorised parking areas:—

Note.—Special parking areas are provided in Queen and Russell Streets. Charge, 1/- per day.

Cars must be parked on an angle so that they can take up or leave position without disturbance of other cars.

