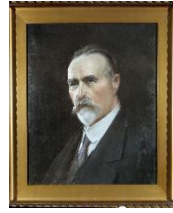


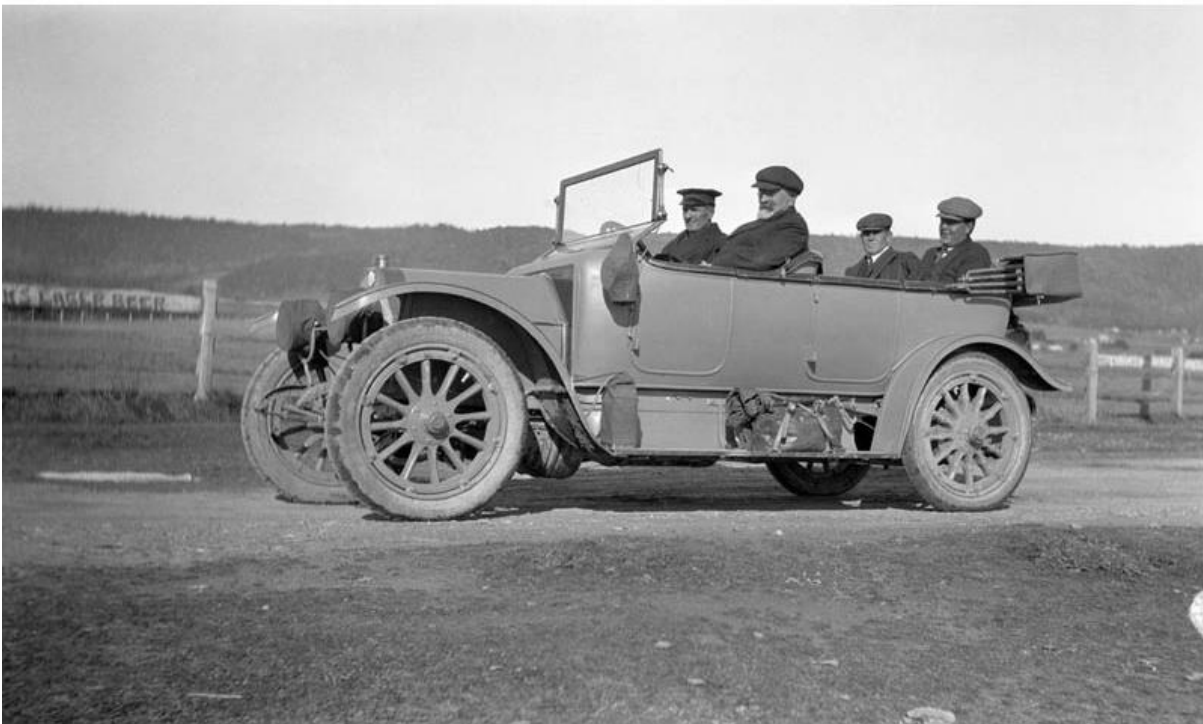
## First Chairman

William Calder (1860 – 1928) engineer



William Calder (1860-1928), engineer, was born on 31 July 1860 at his father's sheep-farm at Lovell's Flat, Milton near Dunedin, New Zealand. He started as a cadet in the New Zealand Government survey department in 1883. In 1888 he passed the authorised surveyor's examination and shortly after migrated to Victoria. He was appointed Assistant Town Surveyor for the City of Footscray and in 1890 became Town Engineer. Among his achievements were construction of, allegedly, the first asphalted carpet-road surface and the first refuse destructor in Australia, and the completion of a major drainage project.

By 1912 the appalling condition of Victoria's rural roads was a major concern to both farmers and motorists. That year a Country Roads Board (CRB) was set up to take over responsibility from the Board of Lands and Works for the care and management of the main roads of the state and Calder was appointed chairman, with W.T.B McCormack and F.W. Fricke as the other members.



The first Board (with driver) inspecting the roads.



When the Country Roads Board (CRB) was established in 1913 there were hopes that it would build a coastal road but this was not to be as the CRB's role when it was created was to determine which roads should be main roads and to build and maintain these roads. In 1918 the Development Road Act was passed giving the CRB approval and money to build development roads, these were roads to link farming communities to either rail heads or to main roads.