

COUNTRY ROADS BOARD ALLOCATIONS FOR 1968-69

70 MILLION DOLLARS FOR ROAD AND BRIDGE WORKS

During the past weeks the Country Roads Board has been considering the recommendations of its engineers and submissions from Municipal Councils throughout the State regarding the programme of road and bridge works for the financial year commenced 1st July, 1968.

Revenue for the year 1968/69 has enabled the Board, after taking account of its estimated expenses including statutory payments and servicing of loan funds, to allocate \$69,971,000 for the maintenance, reconstruction and improvement of various classifications of roads.

The classifications of roads and amounts allocated are:

Roads which are a direct responsibility of the Board.

State highways and By-pass roads	\$27,651,000
Tourists' roads	2,965,000
Forest roads	717,000
	<hr/>
	\$31,333,000

Amounts provided for roads under the care and management of Municipal Councils are:

Main roads	\$21,746,000
Unclassified roads	\$16,892,000

The funds allocated cover a wide range of projects. Details of the more important works to be carried out under the direct supervision of the Board will be found in this edition of C.R.B. News.

BY-PASS ROADS

Lower Yarra Freeway

Commencement of construction of the 4 mile long Lower Yarra Freeway which comprises the western approaches to the Lower Yarra Crossing. Some work will also be commenced on upgrading the existing street system on the eastern side of the Crossing. All preliminary work included clearing the right of way, removal of buildings and shifting of services will be completed.

Strathmore By-Pass Road

Construction will continue on this important part of the Tullamarine Freeway two miles in length between Bell Street, Coburg and the Calder Highway (Bulla Road), North Essendon.

Princes By-Pass Road (Laverton Section)

Work will continue on the development of this by-pass road including the construction of an overpass at Kororoit Creek Road.

Princes By-Pass Road (Dartmoor Section)

Construction of the new bridge over the Glenelg River and its approaches will be completed.

Frankston By-Pass Road

Construction of the southbound carriageway between William Street and McMahon's Road will be commenced.

THE

CRB NEWS

Vol. 1, No. 9

October, 1968

NEW BOARD MEMBER APPOINTED

Mr. J. D. Thorpe, C.E., M.I.E. Aust., M.I.T.E., (U.S.) was appointed a Member of the Country Roads Board on the 1st July, 1968 after serving as Chairman of the Traffic Commission from July, 1956, to June, 1968.

Mr. J. D. Thorpe joined the C.R.B. in 1926 as a junior clerk but transferred to the engineering staff as a junior engineering assistant the following year. In 1929 he was promoted to Engineering Assistant and after qualification as an engineer in 1933, became an Assistant Engineer in 1935.

In 1938 Mr. Thorpe was appointed Assistant Asphalt Engineer and continued in that position until 1941 when he left to serve as Officer Commanding the 2/1 Flash Spotting Battery. He returned to the Board in 1946 as Assistant Divisional Engineer, Dandenong Division and was appointed Assistant Highways Engineer in 1948, a position he held until seconded to the Traffic Commission.

While Chairman of the Traffic Commission Mr. Thorpe took a prominent part in preparation of the Victorian Road Traffic Regulations, the setting up of the State Accident Record System the Metropolitan Route Marking System and the Clearway System as well as in the preparation of standards for the design and use of the traffic con-



Mr. J. D. Thorpe.

trol signals and road signs now in use in Victoria.

During his term as Chairman of the Commission he was also Chairman of the Safety Inspection Advisory Committee (vehicle inspection) and the Australian Committee on Road Devices and a member of the Metropolitan Transportation Committee, the Australian Road Safety Council, the Australian Road Traffic Code Committee, the Australian Motor Vehicle Design Advisory Panel, the Conference of State Traffic Control Engineers and the Human Factors Committee of the Australian Road Research Board. He took a prominent part in the preparation of the National Road Traffic Code.

STATE HIGHWAYS

PRINCES HIGHWAY WEST

Corio Shire

Construction of the bridges and approaches at the Separation Street road over rail overpass will continue.

Hampden Shire

Reconstruction of 2.0 miles at Weerite in the Shire of Hampden to provide a 24 feet wide sealed pavement.

Reconstruction of 4.8 miles between Terang and Garvoc to provide a 24 feet wide sealed pavement.

(Continued on page 2)

COUNTRY ROADS BOARD ALLOCATIONS

Warrnambool Shire

Resheeting 6.2 miles between Garvoc and Panmure to provide a sealed pavement 24 feet wide.

Warrnambool City

Construction of dual carriageways through Warrnambool. Completion of 1.15 miles from Bell Street to Liebig Street.

Portland Shire

Completion of the reconstruction of 5.57 miles west of Heywood to provide a sealed pavement 24 feet wide.

PRINCES HIGHWAY EAST

Oakleigh City

Construction of a multi lane highway from Castlebar Road to Ferntree Gully Road, a distance of 1.36 miles.

Berwick Shire

Extension of four lane dual carriageways from Hessel's Road to Cranbourne - Berwick Road a distance of 1.2 miles.

Completion of the reconstruction of 1.0 mile including provision of climbing lanes at Berwick.

Reconstruction of 1.0 mile east of Garfield deviation to provide a sealed pavement 24 feet wide with improved visibility.

Buln Buln Shire

Reconstruction of 2.3 miles from Robin Hood Motel to Jindivick Road west of Drouin to provide a sealed pavement 24 feet wide.

Avon Shire

Reconstruction of 2.13 miles between Stratford and Bairnsdale to provide a sealed pavement 24 feet wide.

Orbost Shire

Commence construction of 4 miles on a deviated alignment between Maramingo Creek and the New South Wales border to provide a 24 feet wide sealed pavement.

WESTERN HIGHWAY

Sunshine City

Strengthening of the southern carriageway over 1.0 mile between Duke Street and Anderson Street and construction

of deceleration lanes at Cornwall, Westmoreland and Northumberland Roads.

Ararat Shire

Widening, resheeting and minor regrading of 2.14 miles west of Buangor to provide a 24 feet wide sealed pavement.

Kaniva Shire

Reconstruction of 2.3 miles west of Kaniva to provide a sealed pavement 24 feet wide.

Widening pavement and reshaping of 4 miles between Lillimur and Serviceton turn off to provide a sealed pavement 24 feet wide.

CALDER HIGHWAY

Gisborne Shire

Provision of a climbing lane for northbound traffic on steep grades through the Black Forest.

Charlton and Wycheproof Shires

Widening and resheeting 6.76 miles including realignment of curves in Teddywaddy and south of Wycheproof to provide a sealed pavement 24 feet wide.

NORTHERN HIGHWAY

Pyalong Shire

Completion of the widening and resheeting of 2.3 miles between Kurkurac Creek and High Camp.

Waranga Shire

Reconstruction to commence over 3.06 miles south of Elmore to provide a sealed pavement 24 feet wide including treatment of a sub-standard curve near the 95 mile post.

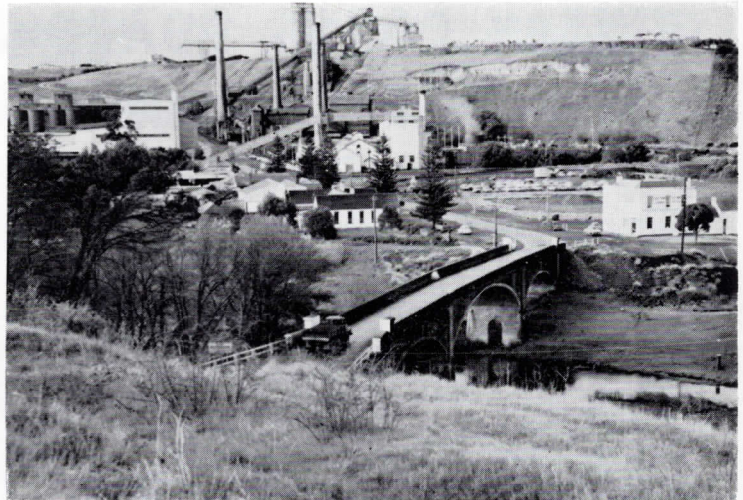
Rochester Shire

Reconstruction of 4.01 miles north of Rochester raising the formation above flood level to provide a sealed pavement 24 feet wide.

HUME HIGHWAY

Broadmeadows

Construction of a channelised intersection at Mahoney's Road including kerb and channel between Mahoney's Road and Anderson Road.



Hamilton Highway. Site of new bridge over Moorabool River in Bannockburn Shire.

Seymour Shire

Construction of a new bridge over Hughes Creek at Avenel, 28 feet wide between kerbs with a footway.

Wodonga Shire

Construction of the duplicate No. 5 bridge over Wodonga Creek upstream of the existing bridge on a new alignment.

OMEO HIGHWAY

Omeo Shire

Completion of Monkey Creek bridge and approaches.

Completion of reconstruction between Omeo and beyond Black Camp Creek to provide a sealed pavement 22 feet wide.

Continuation of widening and curve improvement over 3.0 miles north of Miscalculate Hill towards Lightning Creek.

MURRAY VALLEY HIGHWAY

Upper Murray Shire

Complete reconstruction of 4.08 miles between Pine Mountain Creek and Tintalra to provide a sealed pavement 20 feet wide.

Cohuna Shire

Reconstruction of 5.03 miles west of Gunbower to provide a 24 feet wide sealed pavement.

Swan Hill Shire and City

Construction of dual carriageways over 0.8 mile at the south eastern approach to Swan Hill.

Swan Hill Shire

Raise existing formation above flood level north of Piangil to provide a 20 feet wide sealed pavement.

Widening and resealing of 4.14 miles at Boundary Bend to provide a sealed pavement 20 feet wide.

Reconstruction of 5.3 miles of unsealed pavement west of Wemen to provide a sealed pavement 18 feet wide.

SOUTH GIPPSLAND HIGHWAY

Cranbourne Shire

Completion of reconstruction and resheeting of 4.85 miles south east of Cranbourne.

Completion of reconstruction on a new alignment through Tooradin including approaches to new bridge at Sawtell's inlet to provide a sealed pavement 24 feet wide.

Korumburra Shire

Construction of a road over rail overpass at Loch and a bridge over Alsop's Creek.

Reconstruction of 1.3 miles between Loch and Bena to provide a sealed pavement 24 feet wide.

South Gippsland Shire

Continuation of regrading and realignment of 2.52 miles between Falls Road turn off and Foster deviation to provide a sealed pavement 22 feet wide.

Reconstruction of a further 2 miles of the long length of narrow road between Yarram and the Alberton Shire boundary to provide a 24 feet wide sealed pavement.

MIDLAND HIGHWAY

Geelong West

Construction of a 24 feet wide northern carriageway over 0.4 mile between Church Street and Thompsons Road.

Daylesford and Glenlyon

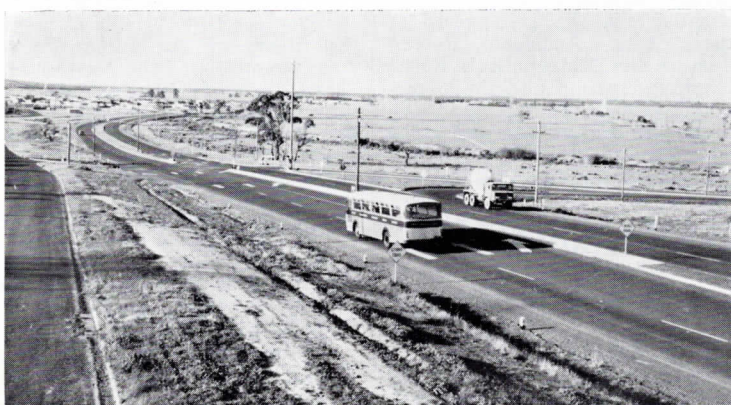
Commencement of reconstruction at Mount Franklin to provide a 24 feet wide sealed pavement over a distance of 6.37 miles.

Shepparton City

Continuation of work in connection with the new approach to Shepparton City including demolishing the existing No. 1 bridge, construction of an embankment and a new channel for the Goulburn River.

Benalla Shire

Completion of the reconstruction of 3.35 miles east of



Princes Highway East near Morwell. Showing new dual carriageways.

(Continued on page 3)

COUNTRY ROADS BOARD ALLOCATIONS

Cowan's floodway to provide a sealed pavement 24 feet wide.

BONANG HIGHWAY

Orbost Shire

Completion of gravelling and sealing 20 feet wide of 5 miles north of Orbost.

Continuation of construction over 2.9 miles towards Wild Cow Creek including completion of the approaches to Dynamite Creek.

STURT HIGHWAY

Mildura Shire

Reconstruction and widening east of Cullulleraine over a distance of 3.6 miles to provide a sealed pavement 24 feet wide.

GOULBURN VALLEY HIGHWAY

Euroa Shire and Shepparton Shire

Widening and resheeting of 4.7 miles at Arcadia to provide a sealed pavement 24 feet wide.

Shepparton Shire

Widening the existing bridge at Seven Creeks to 28 feet between kerbs.

Widening and resheeting of 3.73 miles north of Shepparton to provide a sealed pavement 24 feet wide.

Yea Shire

Widening the existing 12 feet wide sealed pavement to 22 feet wide over a distance of 1.6 miles at Yea.

Reconstruction immediately east of Yea for a distance of 1.14 miles to provide a 24 feet wide sealed pavement.

Commence widening Yea River bridge from 16 feet to 28 feet wide between kerbs and construction of a new bridge over the backwater.

NEPEAN HIGHWAY

Moorabbin City

Commencement of construction of a new western carriageway from Moorabbin overpass to Bay Road a distance of 1.7 miles.

Construction of 6 lane dual carriageways over 0.5 mile adjacent to Southland Shopping Centre.

Construction of pedestrian overpass at Dane Road.

Mordialloc City

Commencement of construction of pedestrian overpass at Elm Grove.

Mornington Shire

Construction of pedestrian overpass near Wooralla Drive, Mt. Eliza.

Construction of dual carriageways over 2.1 miles from Oakbank Road to Tanti Creek with additional 10 feet parking lanes

from Tanti Creek to Dava Drive Mornington.

Completion of intersection treatment at junction with Mornington Dromana Road (Hospital Corner).

Reconstruction over 0.4 mile between St. Paul's Road and Continental Hill, Sorrento with parking lanes constructed with council co-operation.

GLENELG HIGHWAY

Hamilton City

Construction of dual carriageways in Hamilton (Ballarat Road) over a distance of 0.9 mile.

Dundas Shire

Completion of new bridge over the Wannon River at Wannon and construction of approaches over a distance of 1 mile.

OVENS HIGHWAY

Beechworth Shire

Reconstruction of Brookfield railway level crossing to provide a sealed pavement 24 feet wide with flashing lights.

NORTH WESTERN HIGHWAY

Ballarat City

Construction of dual carriageways in Ballarat (Howitt Stret) between Shelley Street and Gillies Street.

Widening, realignment and resheeting of 2.54 miles between Waubra and Lexton to provide a 24 feet sealed pavement.

MAROONDAH HIGHWAY

Lillydale Shire

Commencement of reconstruction of 1.6 miles from "The Grange" to Yarra Flats including a deviation at Maxwell's Hill to provide a 24 feet wide pavement with additional climbing lane.

Commencement of reconstruction of a new bridge 28 feet wide between kerbs over the Yarra River.

Alexandra Shire

Commencement of reconstruction on a new alignment from Breakaway Road to Goulburn Flats north of Acheron Cutting to provide a 24 feet wide sealed pavement over a distance of 2.65 miles.

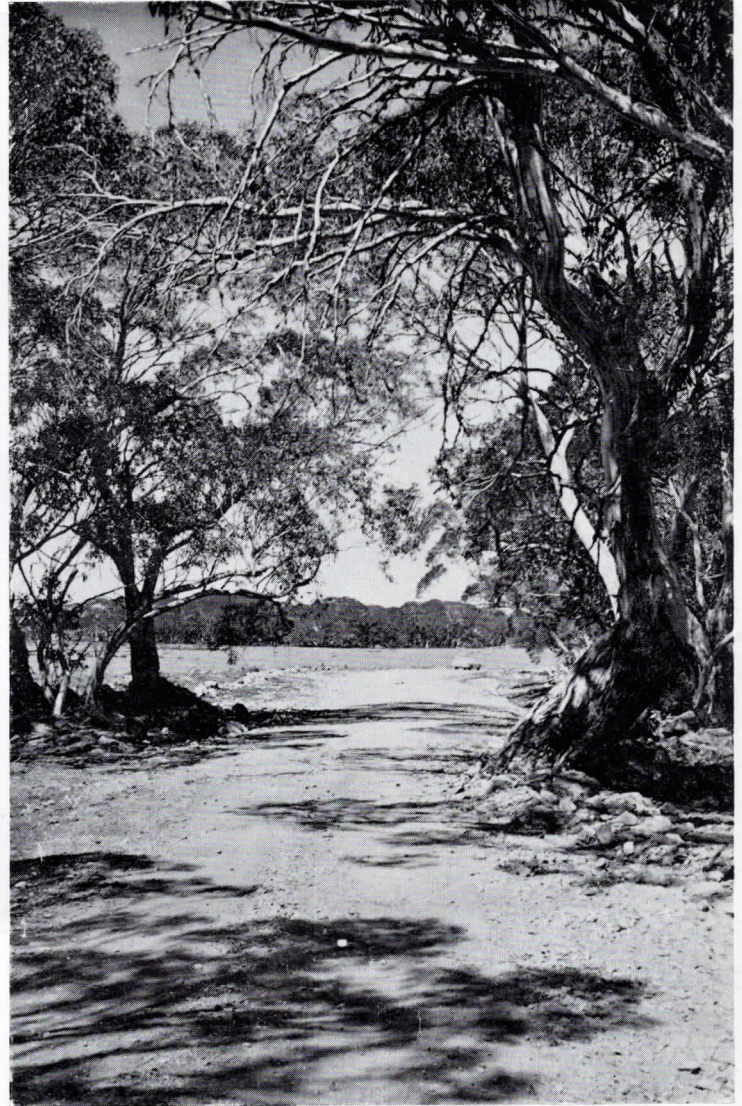
Completion of new bridge and approaches over the Goulburn River.

BURWOOD HIGHWAY

Nunawading City/Knox Shire

Extension of dual carriageways a distance of 0.8 mile from Morack Road to east of Wantirna Sassafra Road including intersection treatment and duplicate bridges over Dandenong Creek.

Construction of intersection



Off the beaten track on the Dargo High Plains.

including a duplicate carriageway at Stud Road.

Ferntree Gully Shire

Completion of reconstruction to provide six lane dual carriageways between Acacia Road and the overhead railway bridge a distance of 0.75 mile.

CANN VALLEY HIGHWAY

Orbost Shire

Continuation of reconstruction over 3.0 miles beyond the Cann River bridge to provide a sealed pavement 20 feet wide.

MdIVOR HIGHWAY

Reconstruction of 4.21 miles through Axedale and westerly to provide a sealed pavement 24 feet wide.

HAMILTON HIGHWAY

Corio/Bannockburn Shires

Construction of a new bridge 316 feet wide by 28 feet between kerbs over the Moorabool River at Fyansford and completion of the approaches.

Mortlake Shire

Completion of reconstruction west of Mortlake to provide a sealed pavement 24 feet wide over a distance of 5.3 miles.

Reconstruction and realignment of 2.97 miles west of Hexham to provide a sealed pavement 24 feet wide.

Mt. Rouse Shire

Completion of reconstruction of the Blackwood Road to Peshurst to provide a sealed pavement 24 feet wide.

KEIWA VALLEY HIGHWAY

Reconstruction of sections north of Dederang to provide a sealed pavement 22 feet wide over 2.8 miles.

WIMMERA HIGHWAY

Kara Kara Shire

Widening and resheeting of 4.8 miles to provide a 20 feet wide pavement and eliminate floodways.

(Continued on page 4)

ROAD TO SUMMIT OF MOUNT WILLIAM COMPLETED BY COUNTRY ROADS BOARD

TOURISTS' ROADS

Alpine Road Omeo Shire

Reconstruction to provide a 24 feet formation will be extended from Cobungra Station to Victoria River.

Mt. Donna Buang Road Healesville Shire

Reconstruction will be completed between Panton's Gap and Don Gap to provide a sealed pavement 20 feet wide.

Widening and improvement of the alignment between Summit turn off and 10 mile turntable to provide a sealed pavement 24 feet wide.

Mt. Buffalo Tourists' Road

Construction of pavement and sealing between Tuckerbox and Lake Catani a distance of 1.0 mile.

Ocean Road Winchelsea Shire

Reconstruction from Windy Point to Sheoak River to provide a sealed pavement 24 feet wide.

Construct approaches to the Cumberland providing a sealed pavement 24 feet wide.

Otway Shire

Reconstruction west of Lavers Hill to provide a sealed pavement 20 feet wide.

Mount Buller Road Mansfield Shire

Widening formation to provide for a sealed pavement 20 feet wide.

Phillip Island Road

Completion of the construction of the Philip Island bridge and its approaches.

Marysville-Woods Point Road

A start will be made on widening and realigning between Kerami Guest House and Robley's Saddle a distance of 1.25 miles.

Reconstruction and widening of 1.0 mile from Tommies Bend to provide a sealed pavement 22 feet wide.

Mount Dandenong Tourists' Road Sherbrooke Shire

Realignment over a short distance at Beauty Bend involving a very deep embankment.

Widening to provide a sealed pavement 24 feet wide between Wantirna Sassafras Road and Perrin Creek Road.

Wilson's Promontory Tourists' Road South Gippsland Shire

Reconstruction between Darby River and Whisky Bay turn off providing a sealed pavement 18 feet wide and a new bridge over the Darby River.



Tourists on top of Mt. William inspect cairn commemorating Mitchell's climb in July, 1836.

The completion of the road to the summit of Mt. William in the Grampians during the financial year 1967/68 marks the conclusion of a project which provides for such diverse uses as access to a navigational aid for commercial aircraft and a scenic lookout for tourists visiting the popular Grampians area.

The Grampians, named by Major Mitchell reminded of the Scottish Highlands when he sighted the range on his journey between Sydney and Portland, provides some of the finest rugged scenery in Victoria which is well served by tourists' roads. Mount William rising to an elevation of 3,830 feet is the highest point in Western Victoria, overlooking vast stretches of the Wimmera, Ballarat and Ararat districts; it also provides a natural site for an automatic radio station which has aerials towering over 4,000 feet above sea level.

The Department of Civil Aviation first proposed construction of a road to the summit of Mount William but the Board and the Tourist Development Authority were quick to appreciate the tourist potential of the proposal. Funds were initially provided for a tourist standard road 6.08 miles long to a turntable and a jeep track 1.26 miles further to the summit of the mountain. This work was completed in 1963 but it soon became apparent that the jeep track was unsatisfactory. As soon as funds could be made available the formation was widened and the sealed road constructed to the summit. The road is now 7.25 miles long starting at 23.17 miles on the Grampians Road rising at an average grade of 1 in 17, with

a sealed pavement 18 feet wide, suitable for 30 m.p.h. traffic.

Steep, Rugged Country

Constructing the road was typical of mountain roadworks. Surveying posed its problems in the rugged inaccessible country where instruments and equipment had to be carried long distances over ground which had side slopes as steep as 48 degrees. Nevertheless survey and design were completed on schedule and the task of cutting the formation through the abrasive sandstone began.

Heavy Bulldozers

Where possible the rock was ripped with heavy bulldozers fitted with cable controlled blades and

parallel linked rippers, but over five miles the rock had to be carefully blasted - a painstaking task with much unproductive time because only four to five feet of depth had to be cut. Each time a charge was set, drilling equipment had to be moved back to safety, only to be moved forward again for the next stage.

Steadily the roadway took shape, culverts were placed to cope with rainfall known to reach 2 inches per hour, and cut batters were trimmed. The pavement was constructed of locally procured materials, shaped to correct superelevation and crossfall and finally sealed.

Cairn to Mitchell

The first stage of the Mount William Road was formally opened by the late Hon. W. J. Mibus, M.L.A., Minister for Water Supply and Minister of Mines in June, 1964 when he unveiled a cairn commemorating Major Mitchell's climb of the peak in July, 1836. No ceremony marked the completion of the road which will be available for tourists visiting the Grampians to see the spring wildflowers and the panoramic views.